



# LAMRIN TECH SKILLS UNIVERSITY PUNJAB



Anchor Partner



TATA TECHNOLOGIES



Industry Partners



ADMISSIONS



OPEN

## ENGINEERING

**B.Tech CSE with**

(Artificial Intelligence, Data Science, Cyber Security and IOT)  
2.5 years Project Based Learning + 6 Months project + 1 year OJD/OJT

**B.Tech Electronics with**

(Semiconductor VLSI Design Technology)  
(3 years Project Based Learning + 1 year OJD/OJT)

**B.Tech Civil with**

(3 years Project Based Learning + 1 year OJD/OJT)

**PAY HALF FEES  
AFTER PLACEMENT**

(3 years Project Based Learning +  
1 year OJD/OJT)

**B.Tech CSE with**

(Full Stack Development)

**B.Tech ME with**

(Digital Manufacturing using AI & CPS)

**B.Tech EE with**

(Smart & Sustainable Power Engineering)

Collaboration  
with

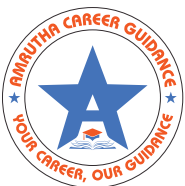


Transforming the skill landscape

ADMISSIONS PARTNER

**AMRUTHA CAREER GUIDANCE**

Near Chaitanyapuri Metro Station,  
Opp. Srichaitanya Techno School, Hyderabad - 500 035.



ADMISSIONS HELP LINE

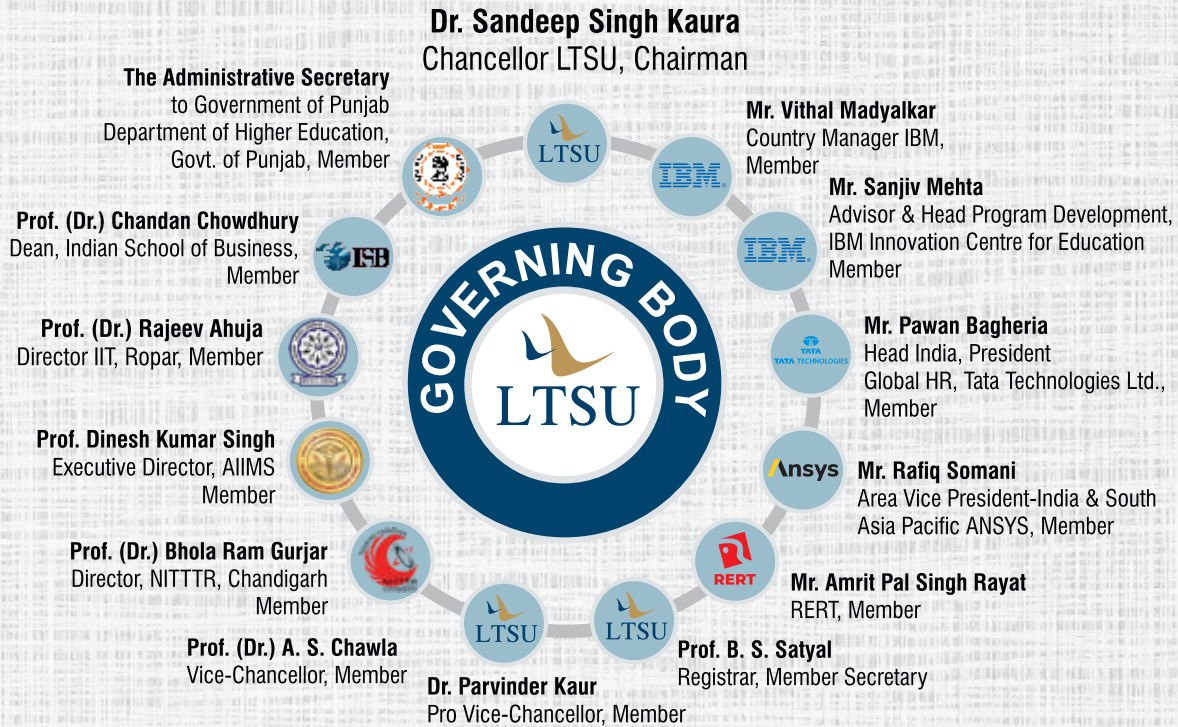


**80 7061 7061**



[www.ltsu.ac.in](http://www.ltsu.ac.in)

# GOVERNING BODY



## OUR ACADEMIC & SKILLING FRAMEWORK

### Center of Specialized Training (CoST):

Diploma, Post Graduate  
Diploma for specialized  
domains  
(12th, ITI and Diploma  
Holder)

### Center of Excellence:

Industry/ International  
Certifications for professional  
career & upskilling  
(Graduates, Post Graduates,  
Ph.D.)

### Center of Vocational Training (CoVT):

Certification Programs for domestic and  
international trades  
(10th, 12th, School Dropouts)



#### School of Start Ups:

Comprehensive learning, covering all aspects  
of entrepreneurship including social  
entrepreneurship.  
(Local Art & Craft and Heritage)



#### School of International Curriculum:

Programs in association with foreign  
universities/ international accreditation bodies  
with internationally valid certifications.



#### School of Research & Development:

For providing powerful knowledge and insights  
for innovation and invention.



#### School of Employability Enhancement and Career Progression:

Global collaborations for placement support  
through an integrated platform to manage the  
career plan of the graduates. Industry curated  
learning plan for creating job ready employees  
across all tech and vocational domains.



#### School of Higher Education & Competitive Examination:

Preparing the learners for higher education in  
their respective domains and competitive  
exams.



## ADMISSIONS PARTNER

**AMRUTHA CAREER GUIDANCE**

Near Chaitanyapuri Metro Station,  
Opp. Srichaitanya Techno School, Hyderabad - 500 035.

## ADMISSIONS HELP LINE

**80 7061 7061**

[www.ltsu.ac.in](http://www.ltsu.ac.in)